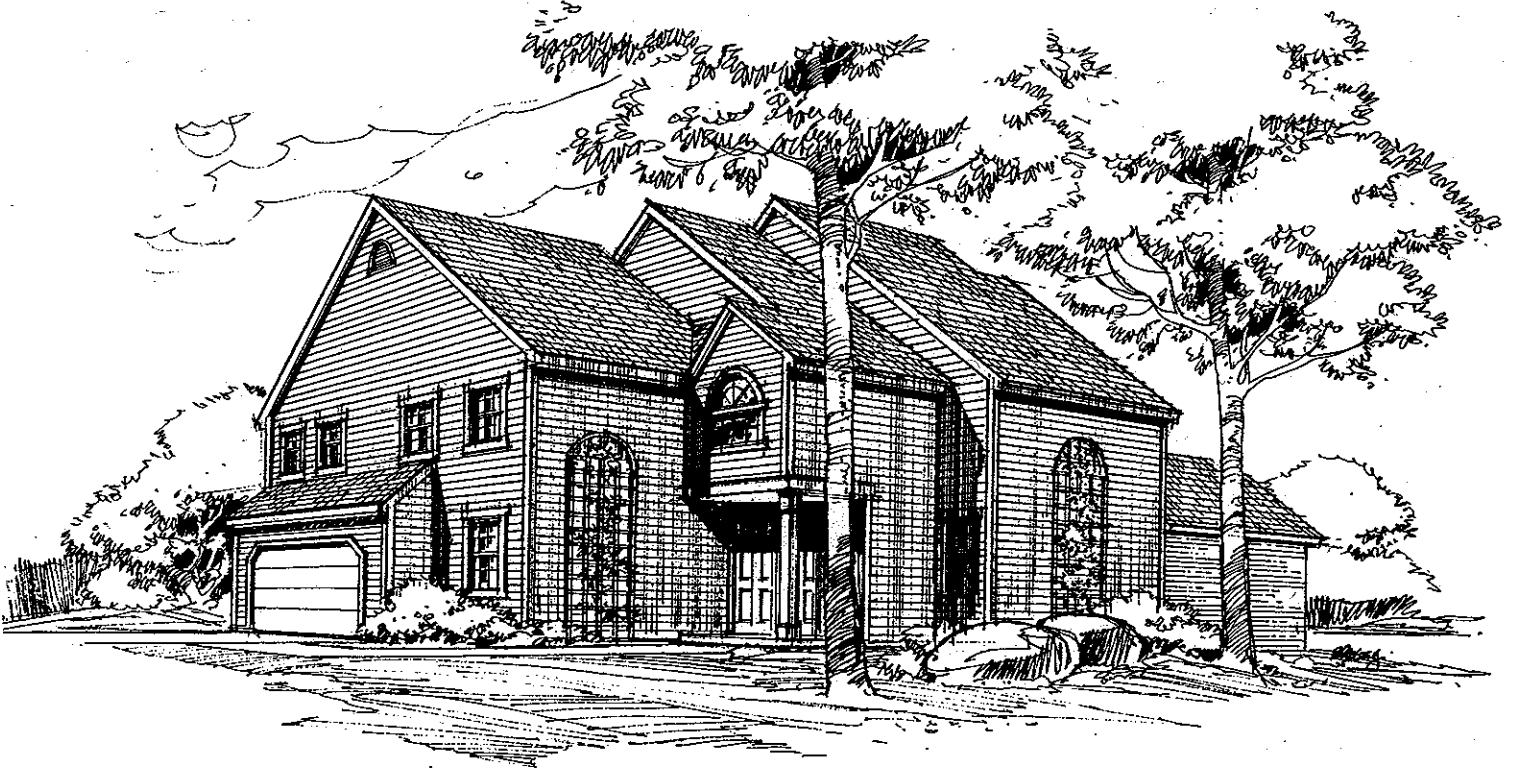
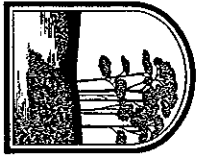


Witley



LAN AVON



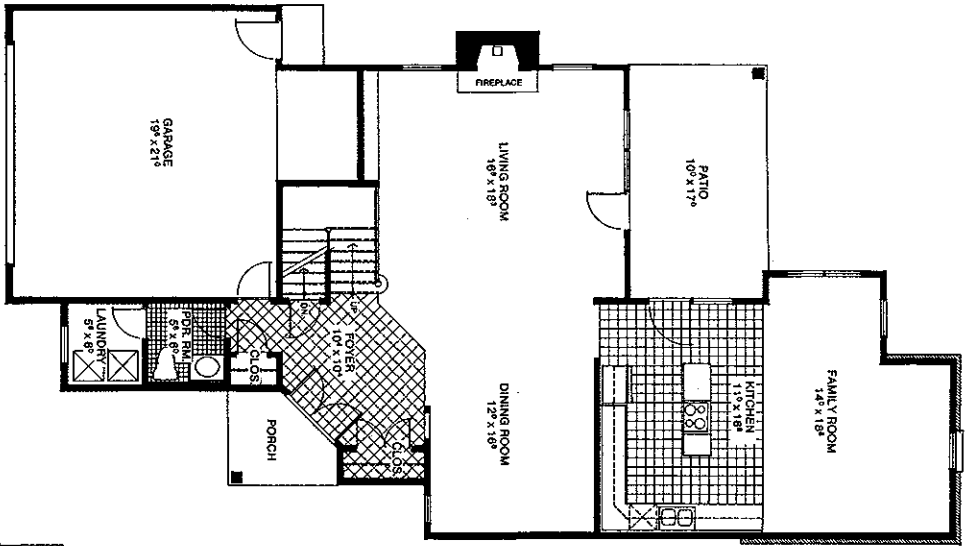
Wiley

The Wiley features 2,330 square feet of living space in a two-story design which includes a first floor family room.

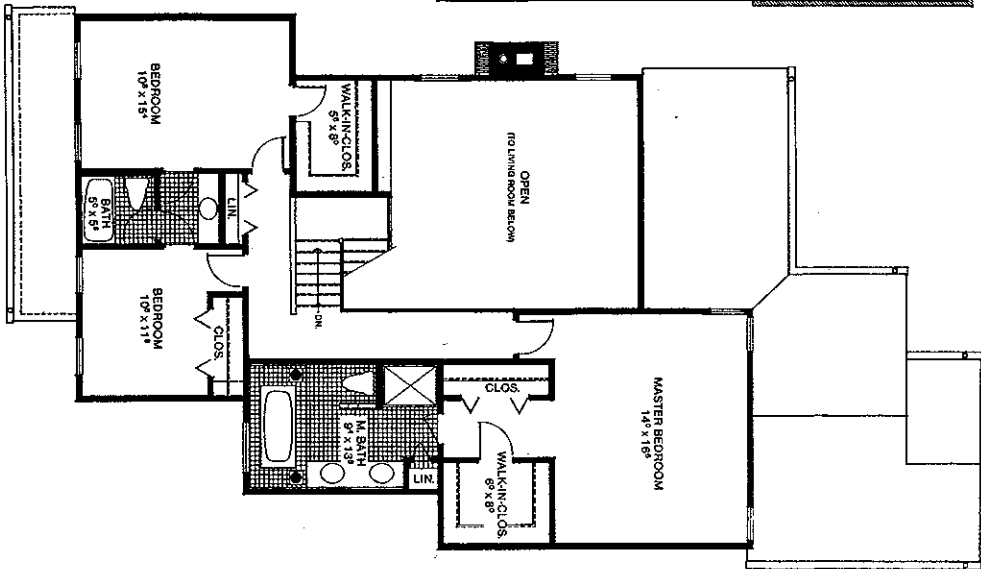
The angled foyer opens into a dramatic great room with cathedral ceiling, fireplace and secluded dining room. Behind the dining room, a gourmet kitchen flows into a spacious family room. The family room and great room both lead to a very private patio. A powder room and laundry room complete the first floor.

A gallery overlooking the great room leads to the master bedroom suite. This area includes a luxurious master bathroom with platform tub, separate shower, double vanity, and linen closet, a walk-in wardrobe and roomy second closet.

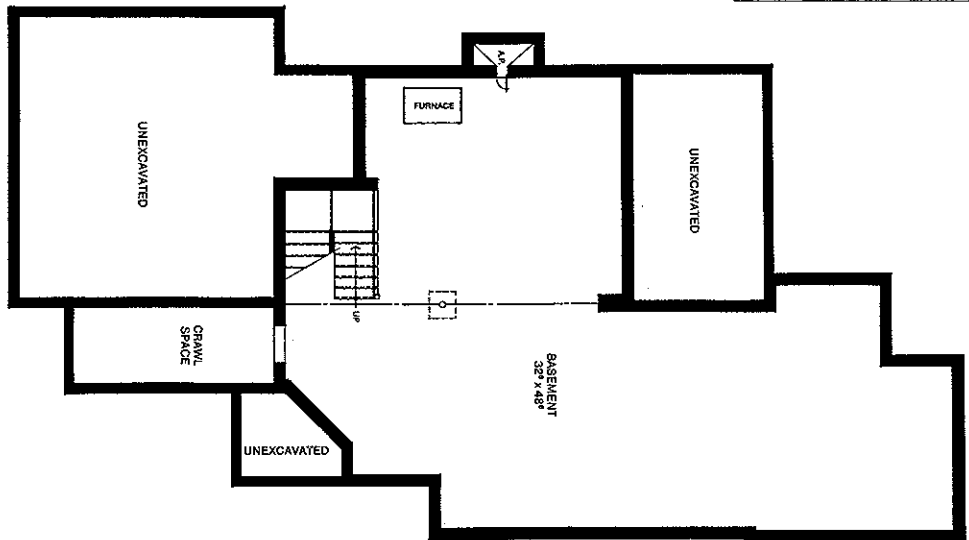
Two additional bedrooms, a second full bath and linen closet complete the second floor. The Wiley has a two car garage, full basement, ample storage and the superb craftsmanship associated with all Ian Avon homes.



First Floor



Second Floor



Basement

Information on this floor plan may be subject to errors and omissions